



Pendulum Choir

## Technical sheet

### TRANSPORT / DELIVERY

---

- 10 closed pallets with wood frames. Dim. 80/120 cm, H. 160 cm  
Metallic frames fixed on an open pallet, size 220/130 cm.
- Total weight: 3400 kg
- Size of access: min. 140 cm
- The pallets must be directly delivered on stage, they can not be stored outside.



### INSTALLATION

---

#### Manpower

To be provided by the organizer:

Installation of the machine:

- 2 persons during 4 hours

Installation of lights:

- 1 persons during 2 hours

Sound installation:

- 1 person during 3 hours

Light adjustments:

- 1 person during 2 hours

Dismantling of the machine:

- 2 persons during 4 hours

#### Machine

Installation: see diagram

Structure of the base:

Dimension 430/340 cm in steel, directly laid on the floor (see plan).

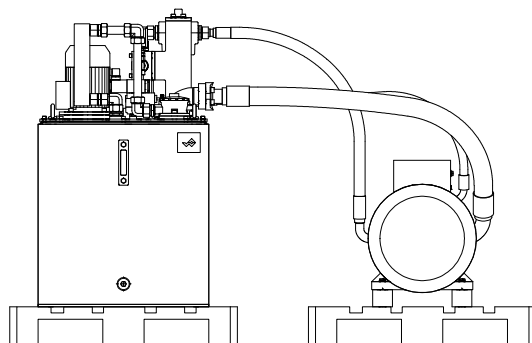
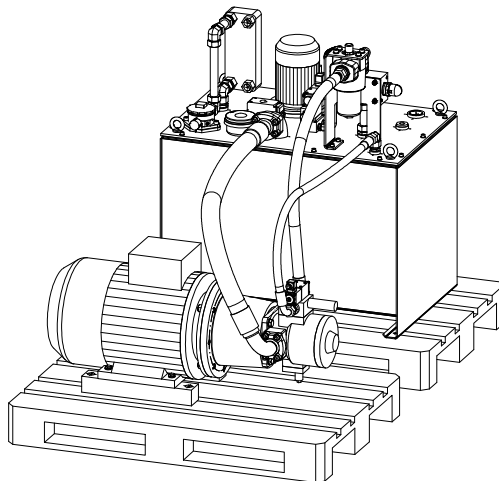
Fix a black carpet (rubber) between the machine and the ground.(Possible oil leaks)



#### Hydraulic unit:

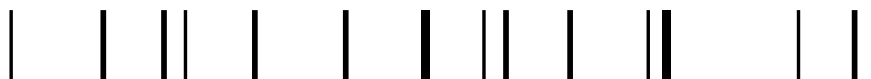
2 pallets euro 80/120cm, aligned one beside the other, 50 cm between them, 350 Kg/pallet. Sound nuisance 80 db, therefore, the pump must be stored in a separate room, far enough so as not to hear it from the stage (total length of the hoses: 30 m). It can be placed outside but then must be protected from rain.

Technical characteristics, connection, and power supply: see diagram

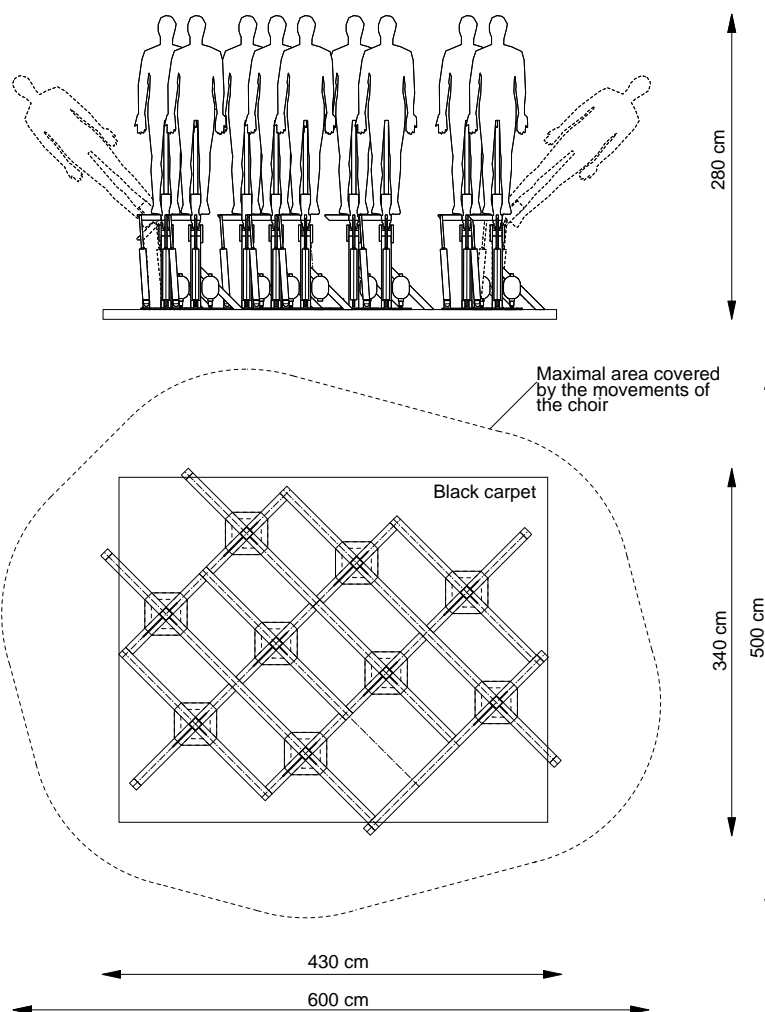


#### Material provided by the organiser:

- Standard tools + wrenches (socket wrench set) + Gafer tape
- Electric cable 230 V, 50 m (extension cables, multi-plugs)
- Electric cable 400 V, 60 A in case the cable provided (10m) is too short.



### Dimension of the installation





## Lights

Provided by the organiser:

- 6 medium profile spots 1KW
- 4 stands H. 300 cm
- 2 stands H. 30 cm
- 1 fresnel 2kW
- Lighting control console
- Colour filters

Installation: see plan

## Sound

Provided by the organiser:

- Soundmixer: 1x Yamaha 01V96 V.2 , equipped with a " MY4-DA Analog Output Card (4-CH. D/A XLR INTERFACE CARD)".  
(Please note that we absolutely need adat and spdif inputs and outputs to communicate between the mixer and our sound interface)

- Diffusion:  
the diffusion comprises 3 pairs of stereo loudspeakers and one pair of subwoofers.

The front system:

2 loudspeakers 2-Way, type L-accoustics 112P or Meyersound UPA-1,  
fixed at approx. 3 m from the floor.

2 subwoofers, type L-accoustics SB 15P, Meyersound USW, on the floor.

The surround pairs:

1 surround pair behind the choir, 1 surround pair behind the public (4 sound sources): 2-Ways loudspeakers, type L-accoustics 112P or Meyersound UPA-1, fixed at approx. 3 m from the floor.

- Multi Core audio on stage with enough channels to plug the microphones of the 9 singers, two stage monitors and, if needed, the 6 loudspeakers.

Provided by the artists:

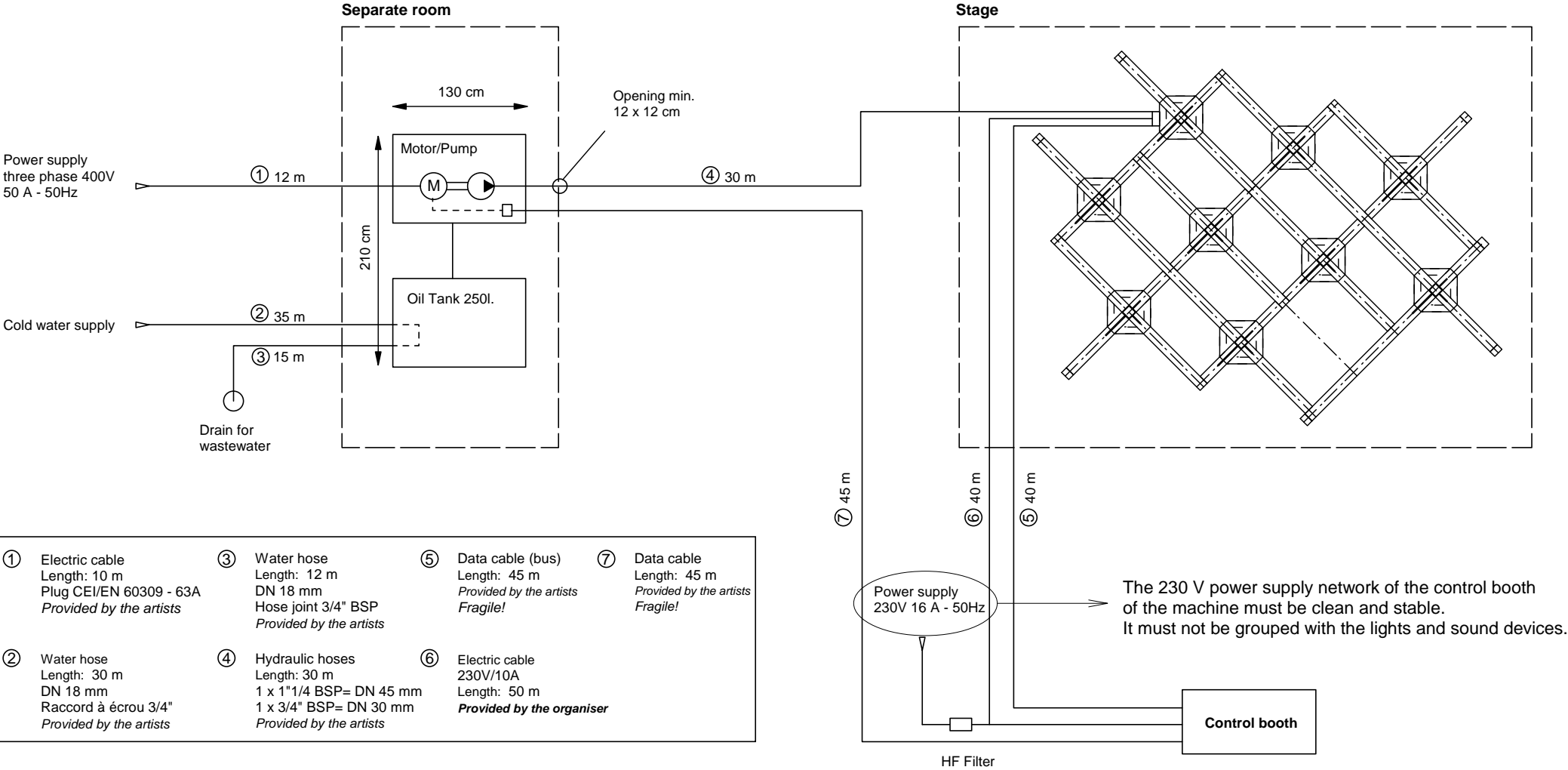
- 9 microphones for the singers
- 2 stage monitors

## CONTACTS

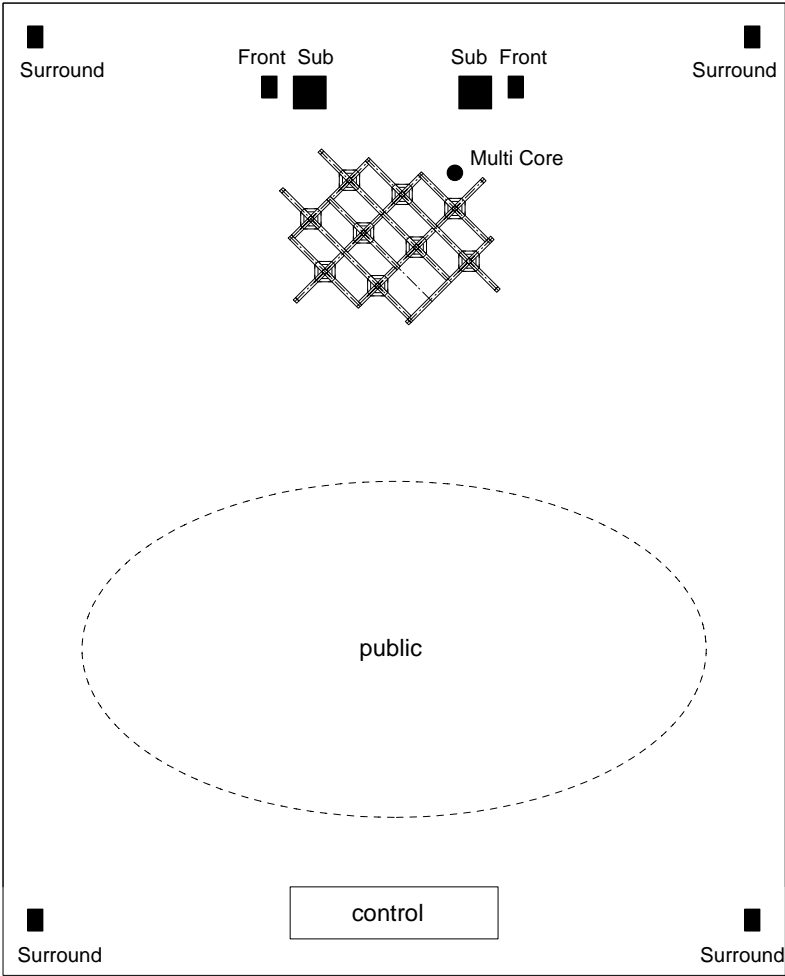
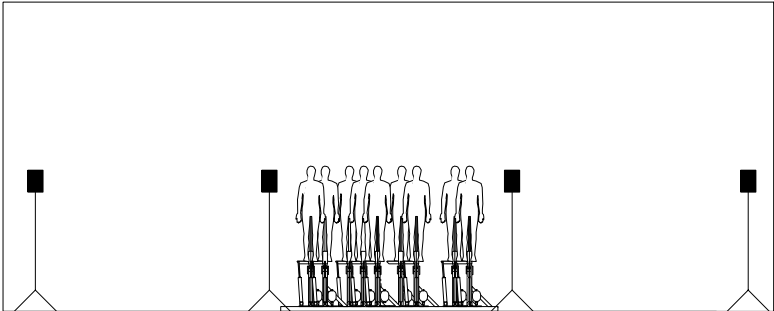
Machine : Michel Décosterd - michel\_decosterd@codact.ch  
 Lights : Michel Décosterd - michel\_decosterd@codact.ch  
 Sound : André Décosterd - andre\_decosterd@codact.ch

Pendulum Choir

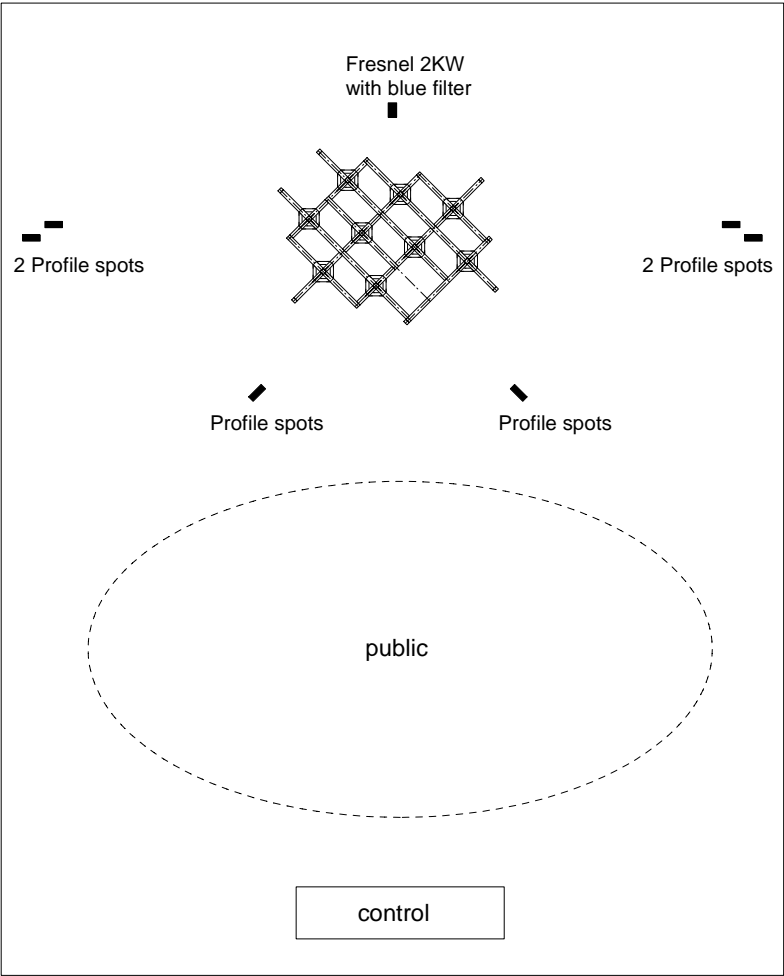
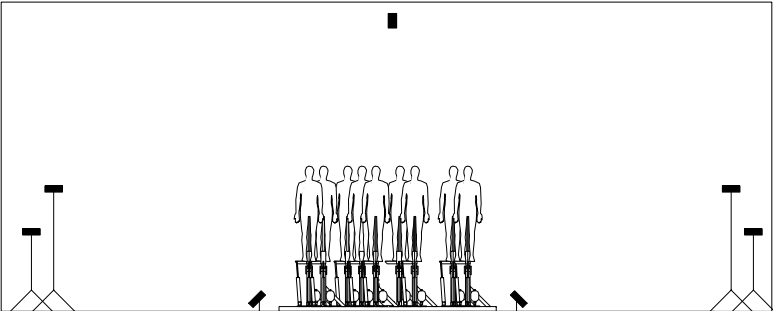
Diagram of the installation of the machine



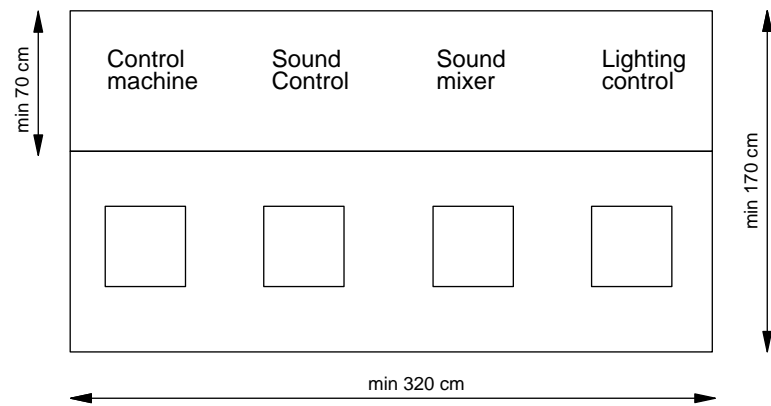
Sound



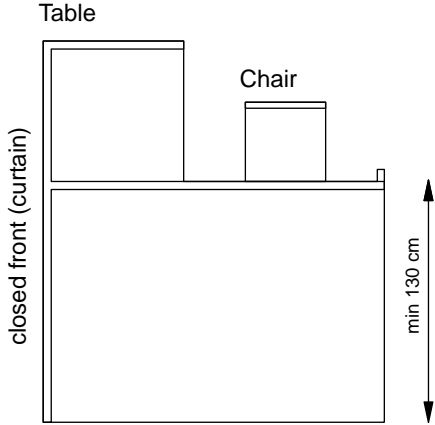
Lights



Control booth  
4 persons



Plan



Cross section